

Diatomite candle filters for beer, wine and fruit juice filtration - type FKS M.

Diatomite filtration is a traditional and integral part of the production technology in brewing industry and in numerous other areas in food industry. Filter candles are most frequently used to remove yeast and biological sediment from beer and wine but also from various fruit juices and concentrates. DESTILA company, which has a long tradition in production of these filters, has been modernising them constantly so that they meet the most demanding requirements for filtration quality and are both economical and energy efficient.

010-040M

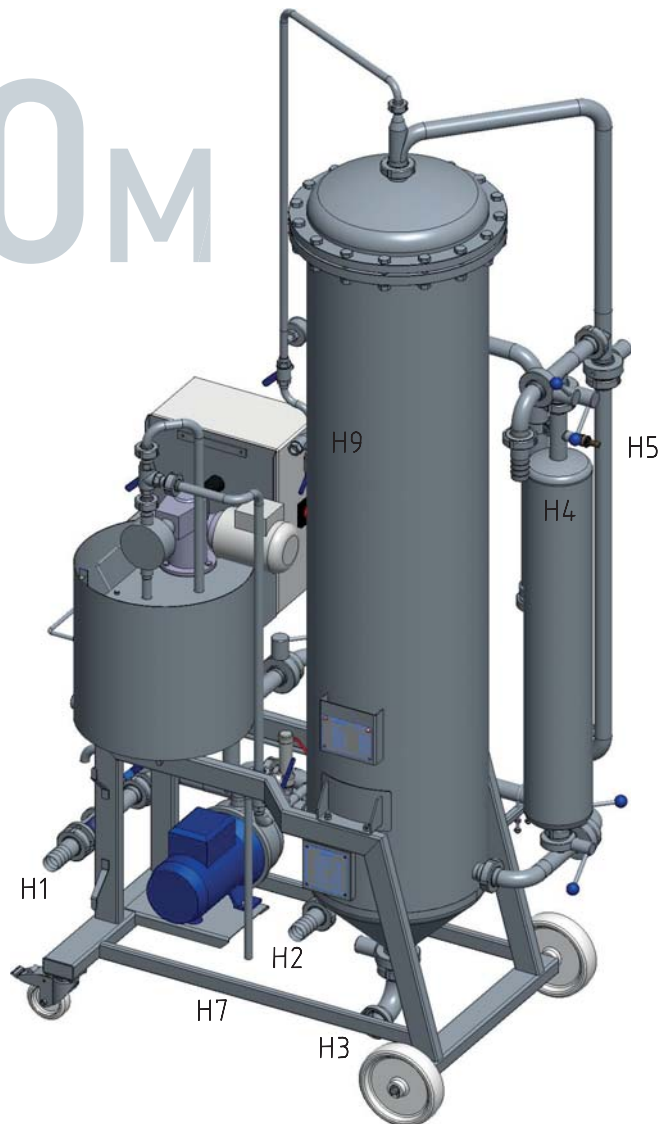
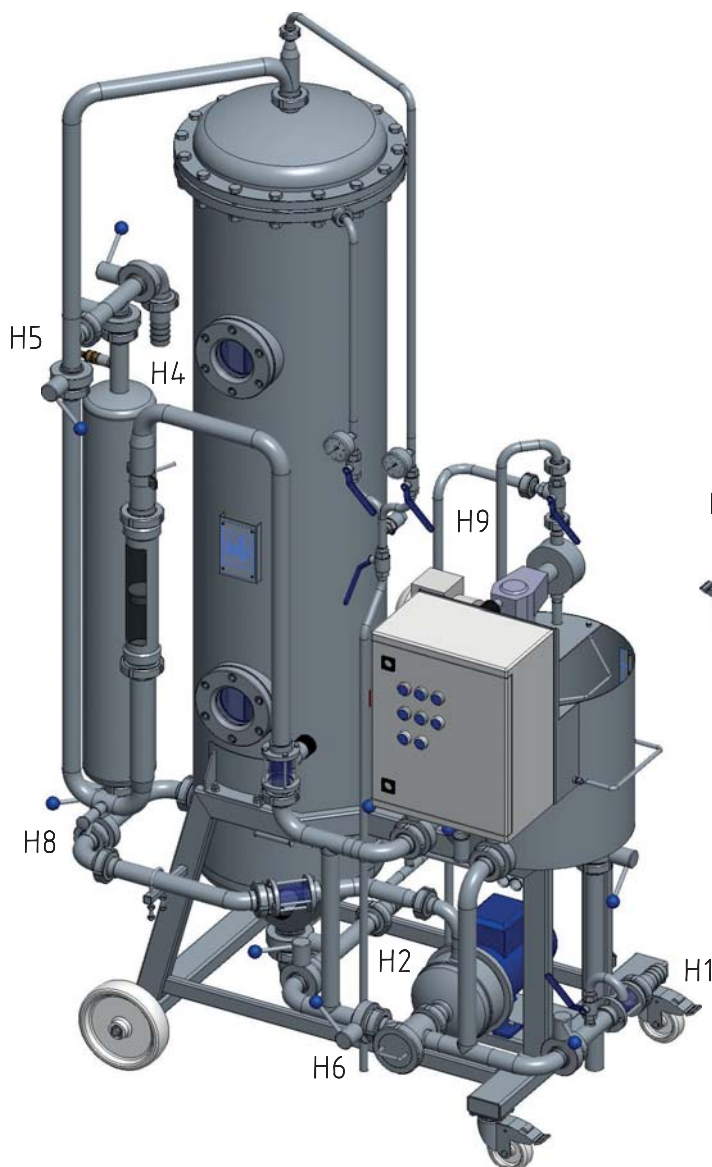


TABLE OF NECKS (FKS 010/020/030-040M)

OZN.	DN	PURPOSE
H1	25/32/40	Beer inlet
H2	25/32/40	Beer outlet
H3	40/50/50	Sludge outlet
H4	1/2"/32/40	Water inlet
H5	1/2"	Air inlet
H6	15	Aeration
H7	15	Safety valve release
H8	8	Sampling
H9	1/2"	CO ₂ inlet

Diatomite candle filters FKS M

The filtration equipment of the FKS M series is intended for primary beer filtration, both using continuous dosing with auxiliary filtration means (continuous dosing during filtration) and without continuous dosing (only to the increased basic filtration layer).

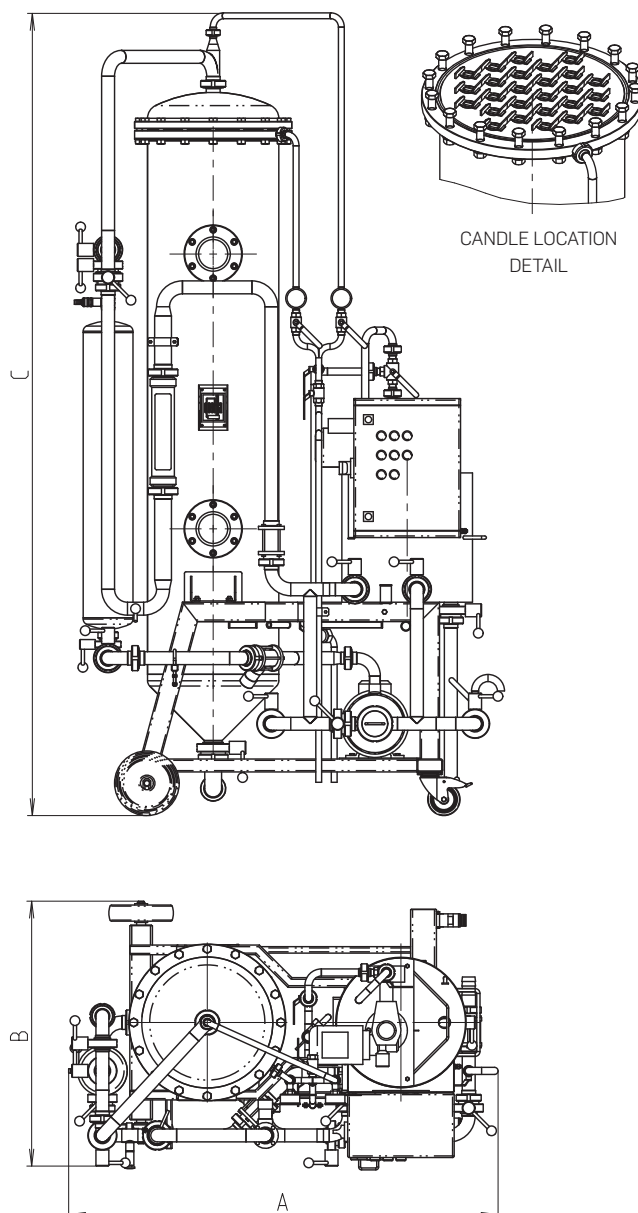
Diatomite candle filters of the FKS type with vertical candle filters are intended for bigger industrial operations. The filtration area is from 1 to 4 m².

The candle design enables its easy assembly and disassembly from the filter housing and easy, fast and high-quality filter cleaning. The candles are cleaned easily by means of counter flushing when it is possible to use a water and air pressure impact of up to 600 kPa without worrying about a possible damage. In case of preventive treatment, it is possible to apply water spray inside the candle without dismounting the filtration candles from the filter. A big advantage of candle filters is their construction based on moving mechanical parts. To a great degree it therefore decreases a risk of the loss of tightness in the sludge area as well as the failure rate of the filter and demand for spare parts and technical maintenance.

The filtration layer is stable as there are more elements on the filtration area of the candles filters and therefore each candle has a lower amount of the filtration means. During filtration, the candle rigidity does not cause any shaking or vibrations which would be transferred to the diatomite filtration layer.

The filters are added as required through the system of levelling tanks and other equipment. They are supplied with various levels of automatization in order to achieve their optimum performance in relation to the connected equipment and peripheries.

According to your requirements, our designers and technologists will prepare a custom-made filtration system with accessories and recommend and test a suitable filtration technology right in your operation.



BASIC DATA

TYPE	Filter output during beer filtration PF [hl/hour]	Filtering area [m ²]	Length A [mm]	Width B [mm]	Height C [mm]	Assembly height [mm]	Weight [kg]
FKS 010 M	5-8	1	1130	660	2190	3690	155
FKS 020 M	10-16	2	1290	780	2110	3610	250
FKS 030 M	15-24	3	1330	820	2490	3990	335
FKS 040 M	20-32	4	1330	820	2690	4390	345

